

# THE HELLY HANSEN NATIONAL OFFSHORE ONE-DESIGN REGATTA AT MARBLEHEAD RACE WEEK

## PRESENTED BY MOUNT GAY RUM & SAILING WORLD

SAILING WORLD AND MARBLEHEAD RACING ASSOCIATION (MRA) ARE THE CO-ORGANIZING AUTHORITIES. MRA WILL PROVIDE RACE MANAGEMENT.

The notation '[DP]' in a rule in the SI means that the penalty for a breach of that rule may, at the discretion of the protest committee, be less than disqualification.

### 1. RULES

**1.1** This regatta shall be governed by the rules as defined by the Racing Rules of Sailing (RRS).

**1.2** Competitors are urged to refrain from displaying advertisements for businesses or products competing with those of the primary and support sponsors of the event. [DP]

**1.3** RRS Appendix T (Arbitration) will apply.

**1.4** For the IOD and Town Classes only, RRS 44.1 and 44.2 are changed so that for infringements of the rules in Part 2 only one turn, including one tack and one gybe, is required.

**1.5** For the J/70 Class: J/70 class rules I.3, I.4, Part III-Section I shall apply.

**1.6** For the J105 Class: The Class has authorized the following changes to their class rules for this regatta:

The maximum weight may increase from 1,045 lbs to 1,200 lbs.

To allow a mast-mounted spinnaker halyard cam or clam cleat.

The supporting letters of permission are posted on the Official Notice Board.

**1.7** The US Sailing Prescriptions to RRS 63.2 shall not apply.

### 2. NOTICE TO COMPETITORS

**2.1** Notices to competitors will be posted on the Official Notice Board located on the race website at <http://yachtscoring.com/emenu.cfm?eID=4475>.

**2.2** It is the responsibility of each competitor to check the Official Notice Board for amendments or other notices.

### 3. CHANGES IN SAILING INSTRUCTIONS

Any change in the sailing instructions will be posted before 0900 hours EDT on the day it will take effect except that any change in the schedule of races will be posted by 2000 hours EDT on the day before it will take effect.

### 4. SIGNALS MADE ASHORE

**4.1** Signals made ashore will be displayed from the flagpole yardarm at the Corinthian, Eastern, and Boston Yacht Clubs. Flag "AP" with two sound signals means "races have been postponed for all classes"; Flag "AP" over one or more Class Flags with two sound signals means "races have been postponed for the indicated Class(es)".

**4.2** When the AP flag is displayed ashore, '1 minute' is replaced with 'not less than 60 minutes' in RRS Race Signals.

### 5. SCHEDULE OF RACES

**5.1** It is the intent of the organizing authority and the race committee to run as many races as practical on each race day up to a maximum of 12 races for the regatta.

**5.2** The scheduled time of the warning signal for each day of racing is 1200 hours EDT.

**5.3** No warning signal will be made after 1430 hours EDT on Sunday, July 29, 2018.

**5.4** On Thursday only the IOD and Rhodes 19 classes will race.

**5.5** IOD, Etchells, J/105, J/30, Rhodes 19, Town Class, Viper 640, Sonar, J/70, and J/24 classes will race Friday through Sunday.

**5.6** Alerion Express 28, Laser, Megabyte, and Skud 18 will race Saturday and Sunday.

**5.7** This schedule is subject to change pending final entries.

### 6. DIVISIONS, CLASS FLAGS, STARTING SIGNALS AND MARKS

**6.1** Division splits, racing area locations, initial starting order and description of marks will be defined in SI Addendum 1. It will be posted on the Official Notice Board Wednesday July 25, 2018 and copies will be available to all competitors at registration.

**6.2** Warning/Class flags for each class will be the class insignia.

**6.3** Any and all subsequent starting orders will be at the discretion of the race officer for each racing line.

### 7. COURSES

**7.1** Courses are shown in Illustration A, including the order in which marks are to be passed, and the side on which each mark is to be left.

**7.2** The approximate compass bearing from the signal boat to Mark 1, and the designated course will be displayed in the

forward rack of the race committee signal boat. The distance from the leeward mark to Mark 1 will be displayed in the aft rack of the race committee signal boat.

**7.3** Gates: If a gate is not in place, boats shall round the existing leeward mark to port.

**7.4** Offset mark: The offset mark will be the same color as Mark 1. An offset mark may not be set if there is a change of course.

**7.5** A green flag flown no later than five minutes before the start means "Mark 1 for the class about to start will be green. This applies to each rounding of Mark 1 by this class." (changes RRS 27.1 and race signals).

### 8. THE START

**8.1** Boats are requested to check in with Race Committee before their first start each day.

**8.2** The starting line will be between a staff displaying an orange flag on the race committee signal vessel and the course side of the port-end starting mark.

**8.3** The starting area is defined as extending 100 yards beyond each end of the starting line and 150 yards behind the starting line and its extensions. Boats shall keep clear of the starting area and the first leg of the course until their warning signal has been made. [DP]

**8.4** A race committee starting or finishing vessel may set a stand-off buoy. When present, this stand-off buoy, the line attaching it to the race committee vessel, and the race committee vessel are all part of the starting or finishing mark.

**8.5** If any part of a boat's hull, crew or equipment is on the course side of the starting line at her starting signal and she is identified, the race committee shall attempt to identify her on the designated VHF channel.

### 9. CHANGE OF THE NEXT LEG OF THE COURSE WHILE RACING

To change the next leg of the course, the race committee will set a new mark (or move the finishing line) and remove the original mark as soon as practicable. When in a subsequent change a new mark is replaced, it will be replaced by an original mark.

### 10. CHANGE OF COURSE BETWEEN STARTS

If there is a significant wind shift during a series of starting sequences, the Race

# SAILING INSTRUCTIONS

## HELLY HANSEN NOOD REGATTA MARBLEHEAD

Committee may signal a change of course for a class as follows: At the preparatory signal, flag C will be displayed with numerous sound signals, and remain displayed until the starting signal. The signaled fleet will sail to the change mark. This changes RRS 33.

### 11. THE FINISH

**11.1** The finishing line will be between a staff on the race committee signal boat from which a blue flag is displayed and the course side of the nearby mark. For courses designating a downwind finish, the finishing mark will be placed on the side opposite that of the starting mark.

**11.2** Competitors retiring shall report to the Race Committee before leaving the racing area if practicable. If unable to do so, competitors retiring shall report to the Eastern Yacht Club by calling the front desk (781) 631-1400 immediately after coming ashore.

### 12. PENALTY SYSTEM

RRS Appendix T Arbitration will apply.

### 13. TIME LIMIT

The time limit for the first boat in each class is two hours. Boats failing to finish within 30 minutes of first boat to finish will be scored Time Limit Expired (TLE), equal to the number of finishers in her class plus 2. This changes RRS 35, A4 and A5.

### 14. PROTESTS AND REQUESTS FOR REDRESS

**14.1** Protest forms are available at the protest desk at the Eastern Yacht Club. Protests and requests for redress or reopening shall be delivered there within the appropriate time limit.

**14.2** The protest time limit is one hour after the docking of the race committee signal boat for the applicable line.

**14.3** Protests will be heard at the Eastern Yacht Club.

**14.4** The times of protest hearings and the parties involved will be posted on the Official Notice Board

**14.5** On the last scheduled day of racing a request for reopening a hearing shall be delivered (a) within the protest time limit if the requesting party was informed of the decision on the previous day; or (b) no later than 30 minutes after the requesting party was informed of the decision on that day. This changes RRS 66.

**14.6** On the last scheduled day of racing a request for redress based on a protest committee decision shall be delivered no

later than 30 minutes after the decision was posted. This changes RRS 62.2.

**14.7** When the race committee receives a scoring inquiry form, it will review its records and respond as soon as practicable.

### 15. SCORING

One race will constitute a regatta. A boat's score for the series will exclude her worst finish if five or more races have been completed.

### 16. PRIZES

**16.1** Regatta prizes will be awarded by class.

**16.2** An award will be made to the boat which, in the opinion of the organizing authority, had the best overall performance during the 2018 Helly Hansen NOOD Regatta at Marblehead Race Week.

### 17. HAUL OUT RESTRICTIONS

Finns, Viper 640s, Vanguard 15s, Lasers, Megabytes, Skud 18s, and Stars may be hauled each day. All other classes shall not be hauled out during the regatta except with, and according to the terms of prior written permission of the protest committee. [DP]

### 18. BOW STICKERS

**18.1** With the exception of the Town Class, IODs, Lasers, Skud 18s, and Megabytes (and any wooden boats in any class), easily removable bow stickers shall be attached to the forward 25% of both sides of the boat's hull at all times while racing. The stickers are to be attached with the top approximately 6"-10" below deck level and with the leading edge approximately 10"-20" aft of the bow. Bow stickers will be provided in the Skipper's package. [DP]

**18.2** At the discretion of the OA, bow numbers may also be required for some classes. If required, they may be provided and shall be placed on both sides of the boat's hull forward of the bow sticker. Sailing World, as the OA, will not be responsible for bow stickers that were supplied by an outside source. [DP]

### 19. SAFETY REQUIREMENTS AND EQUIPMENT

**19.1** Each boat shall carry the following equipment: prescribed Coast Guard and class association safety equipment, a working VHF radio, Coast Guard approved visual signal for daytime use, and suitable anchor and line for the class and sailing area. Failure to comply with this rule may result in disqualification from one or more

races.

**19.2** A boat may not protest another boat for breaking a class rule prohibiting the carrying of VHF radios while racing. This changes RRS 60.

### 20. RADIO COMMUNICATION AND EMERGENCY CONDITIONS

**20.1** Emergency conditions shall be reported directly to the race committee on the assigned frequency for its line. Boats in need of assistance can also contact the Marblehead Harbor Master on VHF 16. The Boston Yacht Club Dockmaster will monitor VHF Channel (68). The Eastern and Corinthian Yacht Club Dockmasters will monitor VHF Channel (9).

**20.2** Division Channels are as follows:

Outside Line VHF 78

Tinkers Line VHF 71

Halfway Rock Line VHF 72

### 21. COMPETITORS' CONDUCT

The skipper shall be responsible for the conduct of the crew before, during and after racing. In case of conduct that the Race Committee considers to be a gross breach of good manners or sportsmanship, destruction of property or failure to comply with a reasonable request by the Race Committee, the boat whose crew was at fault may be disqualified and/or subject to protest by the Protest Committee under RRS 69. It is the Protest Committee's intention to invoke this Instruction and RRS 69 in appropriate cases.

### 22. MEDIA AND TELEVISION

Competitors give absolute right and permission for any photograph and video footage taken of themselves or the yacht they are sailing during the event, to be published in any media whatsoever, for either editorial or advertising purposes, or to be used in press information.

### 23. DISCLAIMER OF LIABILITY

Competitors participate in the regatta entirely at their own risk. See rule 4, Decision to Race. The organizing authority will not accept any liability for material damage or personal injury or death sustained in conjunction with or prior to, during, or after the regatta.

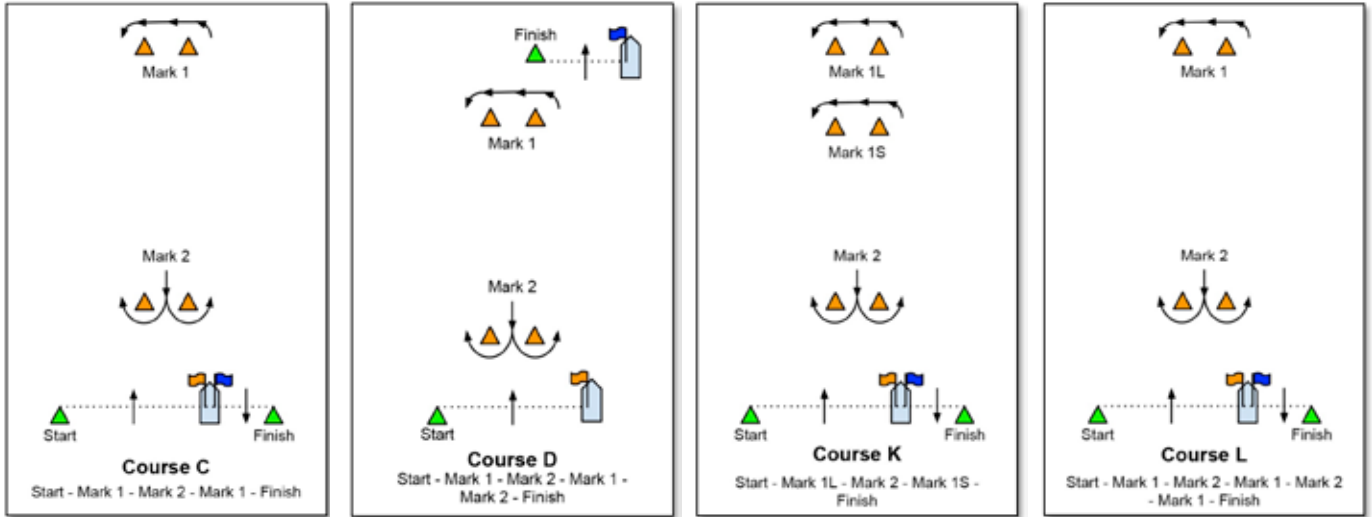
### 24. INSURANCE

Each participating boat shall be insured with valid third-party liability insurance with a minimum cover of \$500,000 per event or the equivalent.

# COURSE DIAGRAMS

## ILLUSTRATION A

### MRA STANDARD COURSES



**HELLY HANSEN**  
**NOOD**  
**REGATTAS**  
1988 - 2018



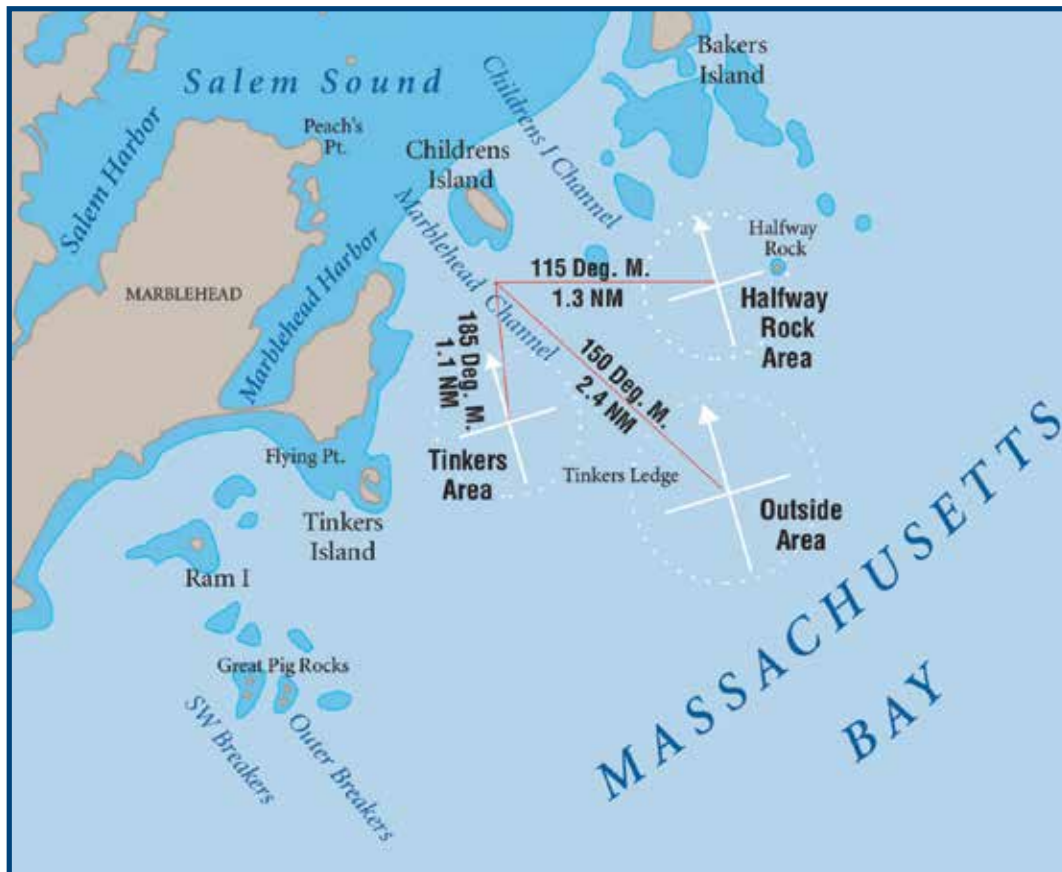
**TEAM ONE  
NEWPORT**

The Foul Weather Gear Experts Since 1985

FOR CUSTOM CREW ORDERS  
CONTACT TEAM ONE NEWPORT  
CALL: 401.8474327  
EMAIL: [ORDERS@TEAM1NEWPORT.COM](mailto:ORDERS@TEAM1NEWPORT.COM)

PHOTO CREDIT: PAUL TODD

**RACING**  
A R E A



**OUTSIDEIMAGES.COM**

Browse our **NOOD** photo library and order prints at [outsideimages.com](https://www.outsideimages.com)

e-mail / [info@outsideimages.co.nz](mailto:info@outsideimages.co.nz)

phone / 401.236.4554

follow / [@outsideimages](https://www.instagram.com/outsideimages)